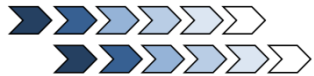
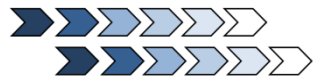
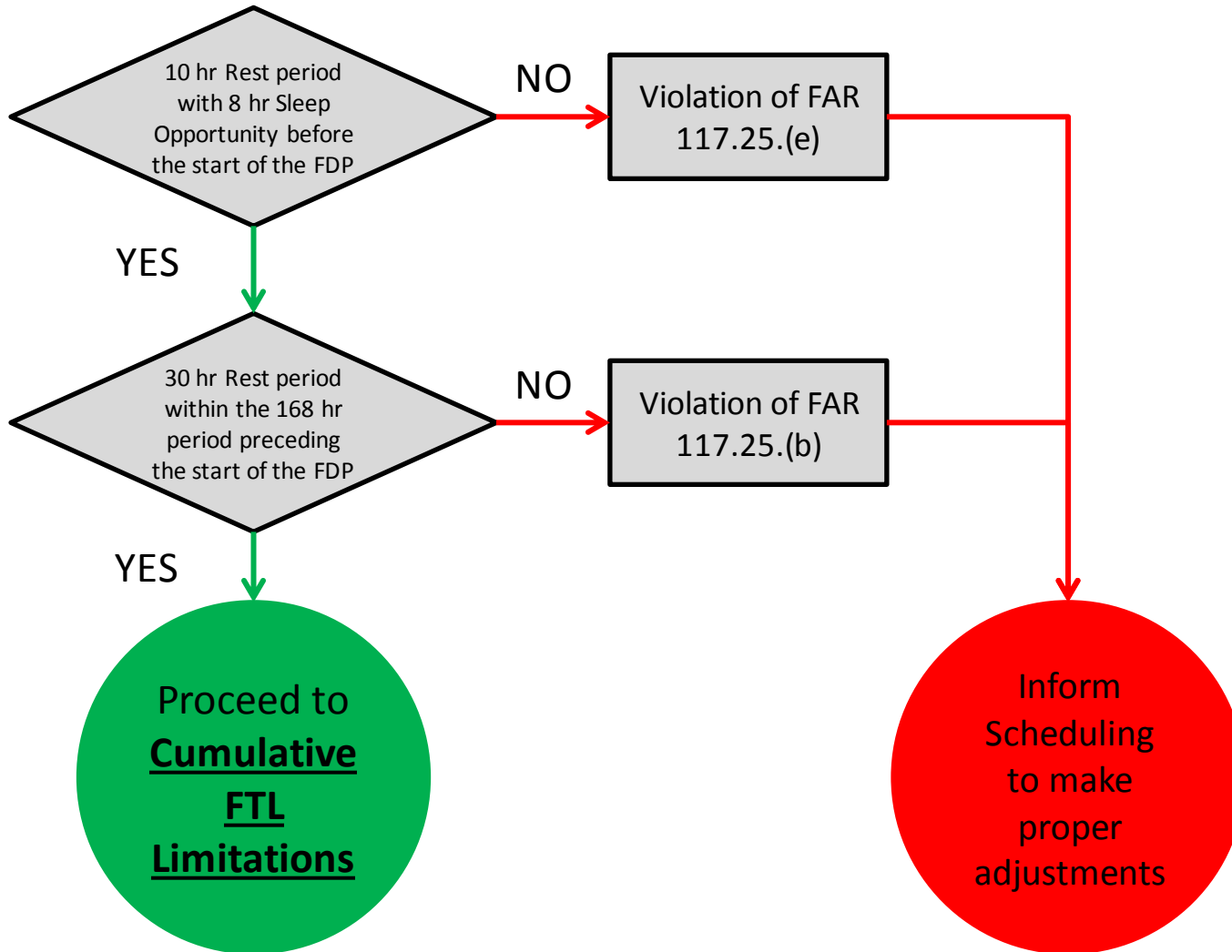


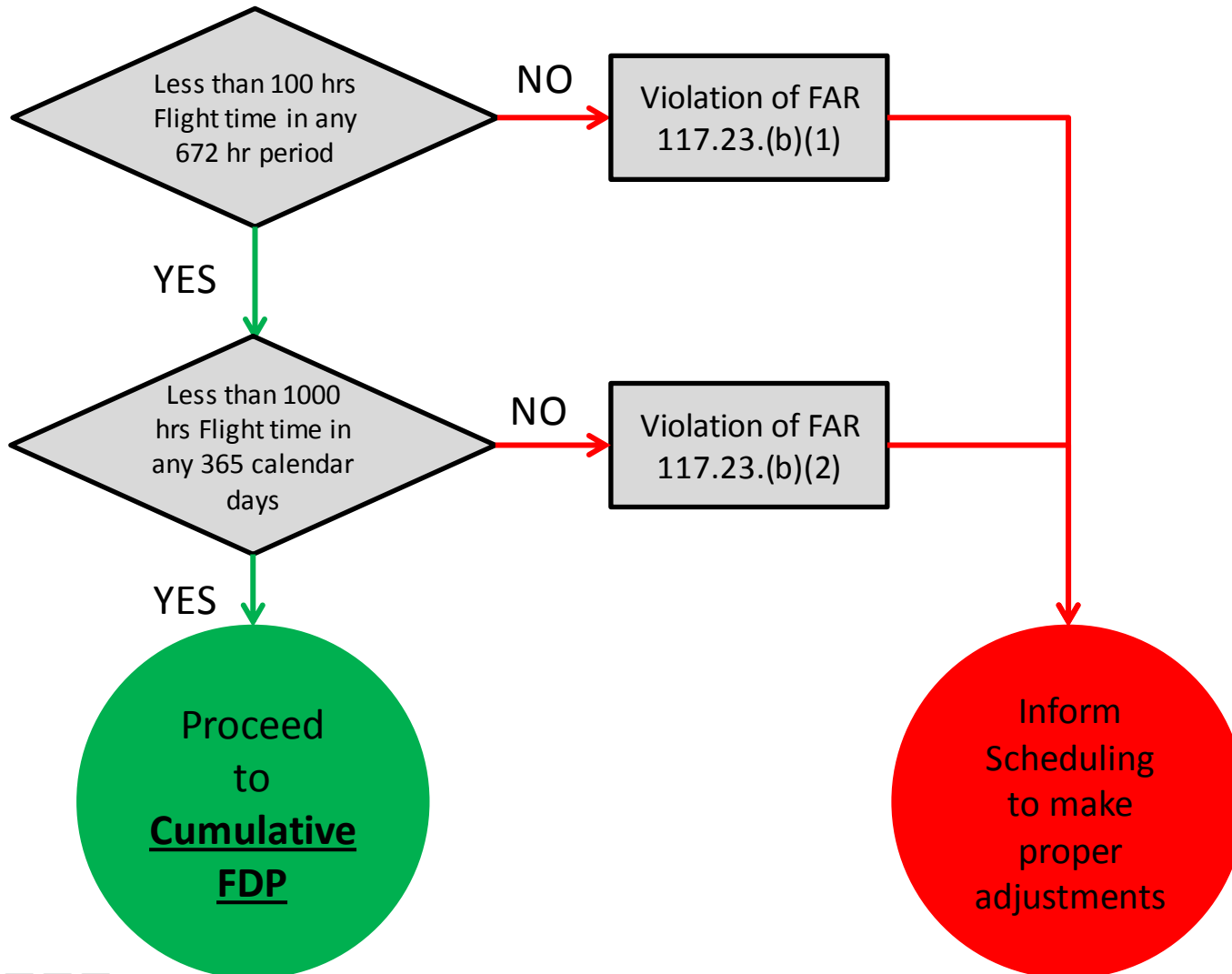
Pilot Aid for Scheduled Limitations Under FAR 117



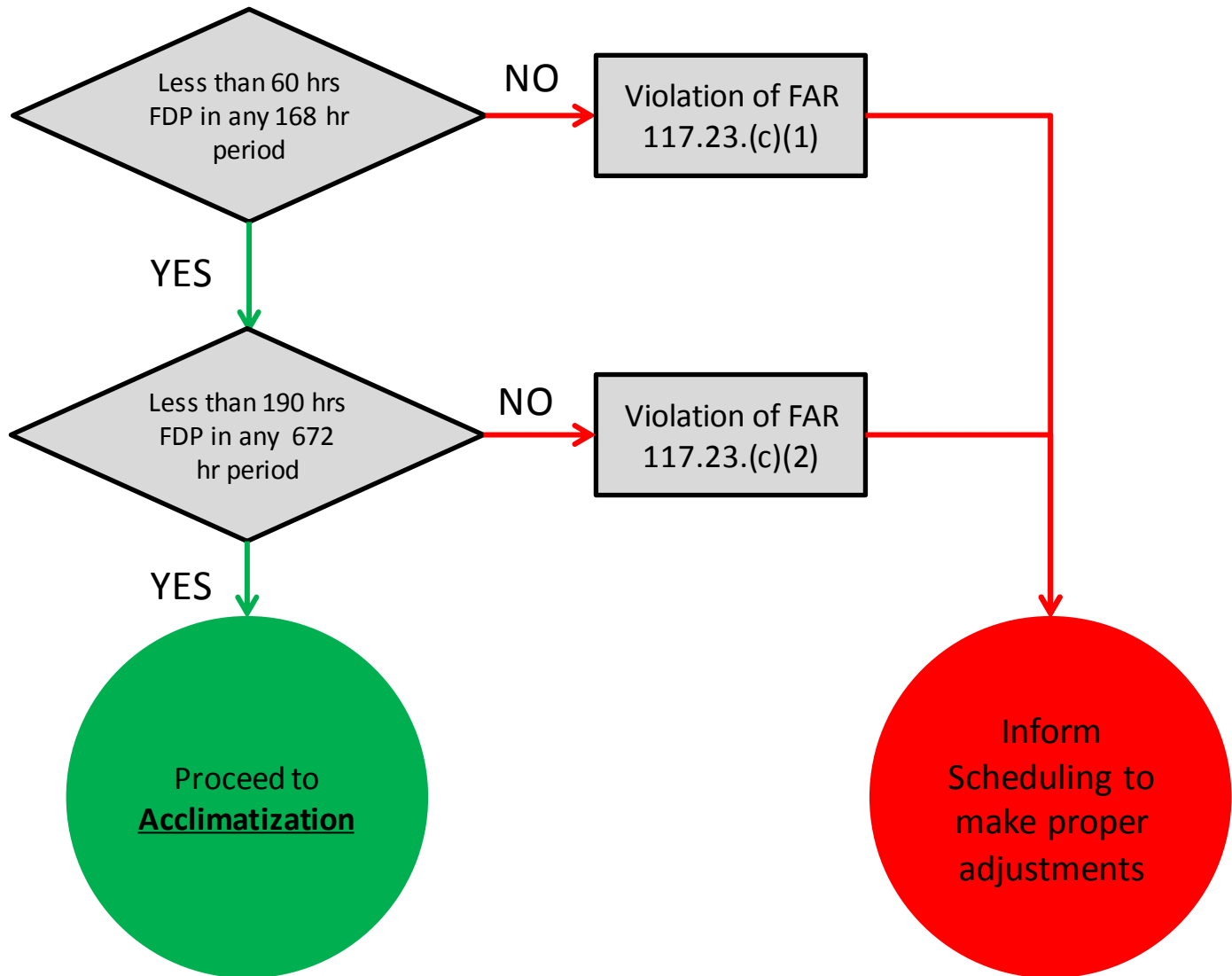
Rest Requirements before starting any FDP/Reserve Assignment



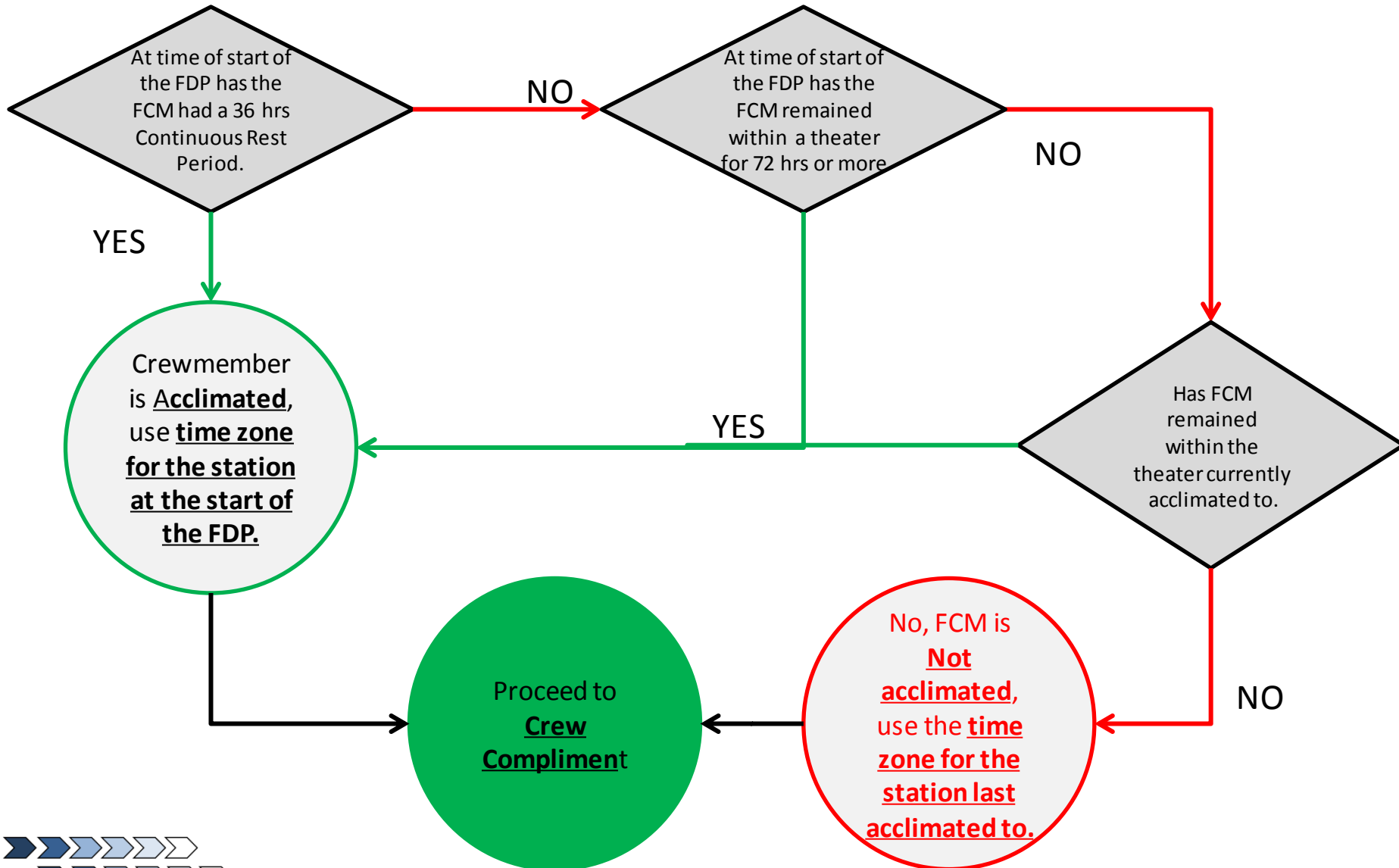
Cumulative FTL Limitations



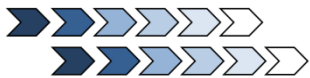
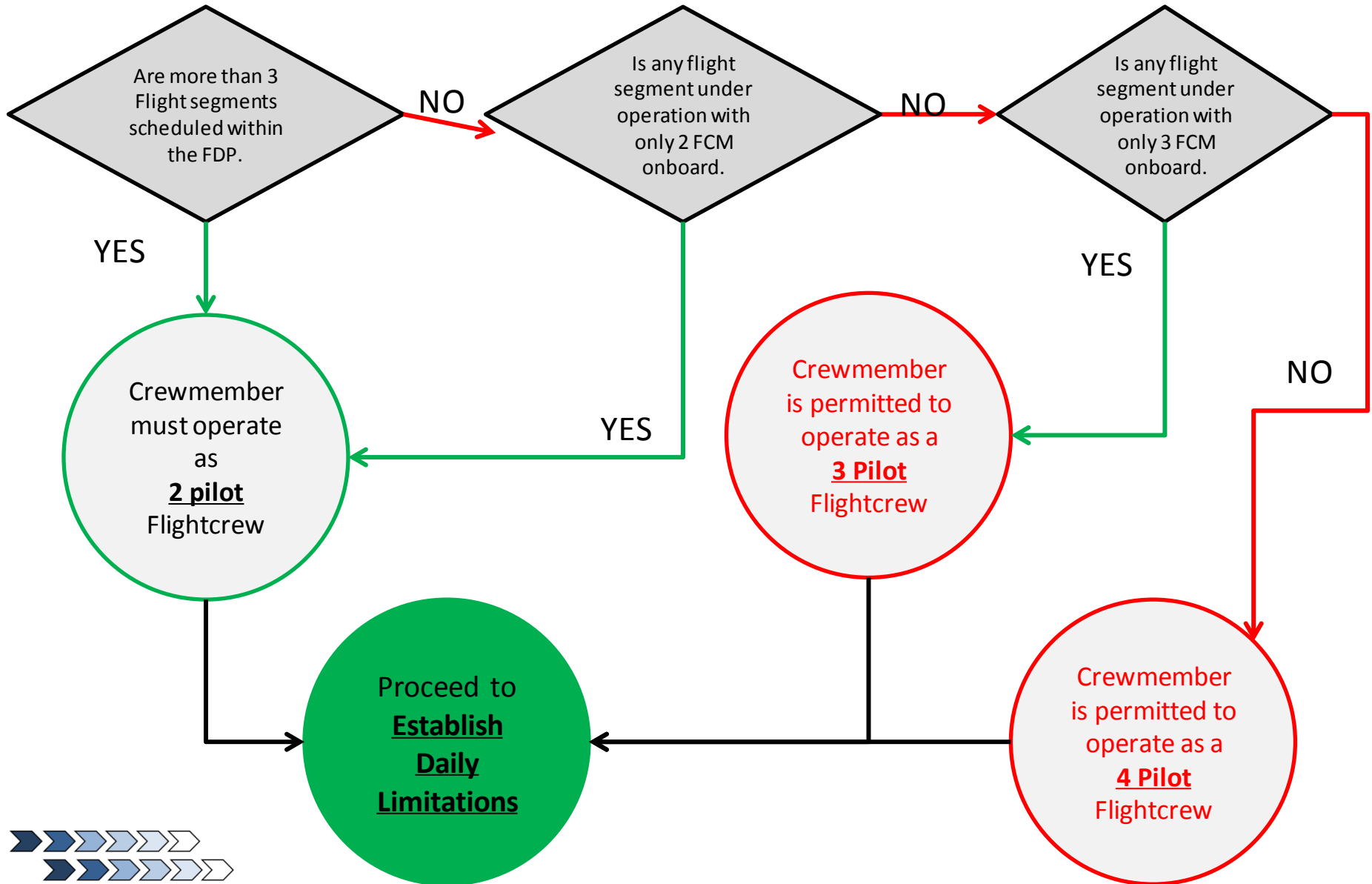
Cumulative FDP Limitations



Acclimatization



Crew Compliment



Establish Daily Limitations

Flight Duty Period Start Time (Acclimated)	2-Pilot Flight Crew								3-Pilot Flight Crew				4-Pilot Flight Crew			
	Permitted Flight Time	Segments							Permitted Flight Time	Class 1	Class 2	Class 3	Permitted Flight Time	Class 1	Class 2	Class 3
		1	2	3	4	5	6	7								
0000-0359	8:00	9:00	9:00	9:00	9:00	9:00	9:00	9:00	13:00	15:00	14:00	13:00	17:00	17:00	15:30	13:30
0400-0459	8:00	10:00	10:00	10:00	10:00	9:00	9:00	9:00	13:00	15:00	14:00	13:00	17:00	17:00	15:30	13:30
0500-0559	9:00	12:00	12:00	12:00	12:00	11:30	11:00	10:30	13:00	15:00	14:00	13:00	17:00	17:00	15:30	13:30
0600-0659	9:00	13:00	13:00	12:00	12:00	11:30	11:00	10:30	13:00	16:00	15:00	14:00	17:00	18:30	16:30	14:30
0700-1159	9:00	14:00	14:00	13:00	13:00	12:30	12:00	11:30	13:00	17:00	16:30	15:00	17:00	19:00	18:00	15:30
1200-1259	9:00	13:00	13:00	13:00	13:00	12:30	12:00	11:30	13:00	17:00	16:30	15:00	17:00	19:00	18:00	15:30
1300-1659	9:00	12:00	12:00	12:00	12:00	11:30	11:00	10:30	13:00	16:00	15:00	14:00	17:00	18:30	16:30	14:30
1700-1959	9:00	12:00	12:00	11:00	11:00	10:00	9:00	9:00	13:00	15:00	14:00	13:00	17:00	17:00	15:30	13:30
2000-2159	8:00	12:00	12:00	11:00	11:00	10:00	9:00	9:00	13:00	15:00	14:00	13:00	17:00	17:00	15:30	13:30
2200-2259	8:00	11:00	11:00	10:00	10:00	9:00	9:00	9:00	13:00	15:00	14:00	13:00	17:00	17:00	15:30	13:30
2300-2359	8:00	10:00	10:00	10:00	9:00	9:00	9:00	9:00	13:00	15:00	14:00	13:00	17:00	17:00	15:30	13:30

Apply the FDP Start Time, correct Crew Compliment , number of Flight Segments and Onboard Rest Facility Class to retrieve:

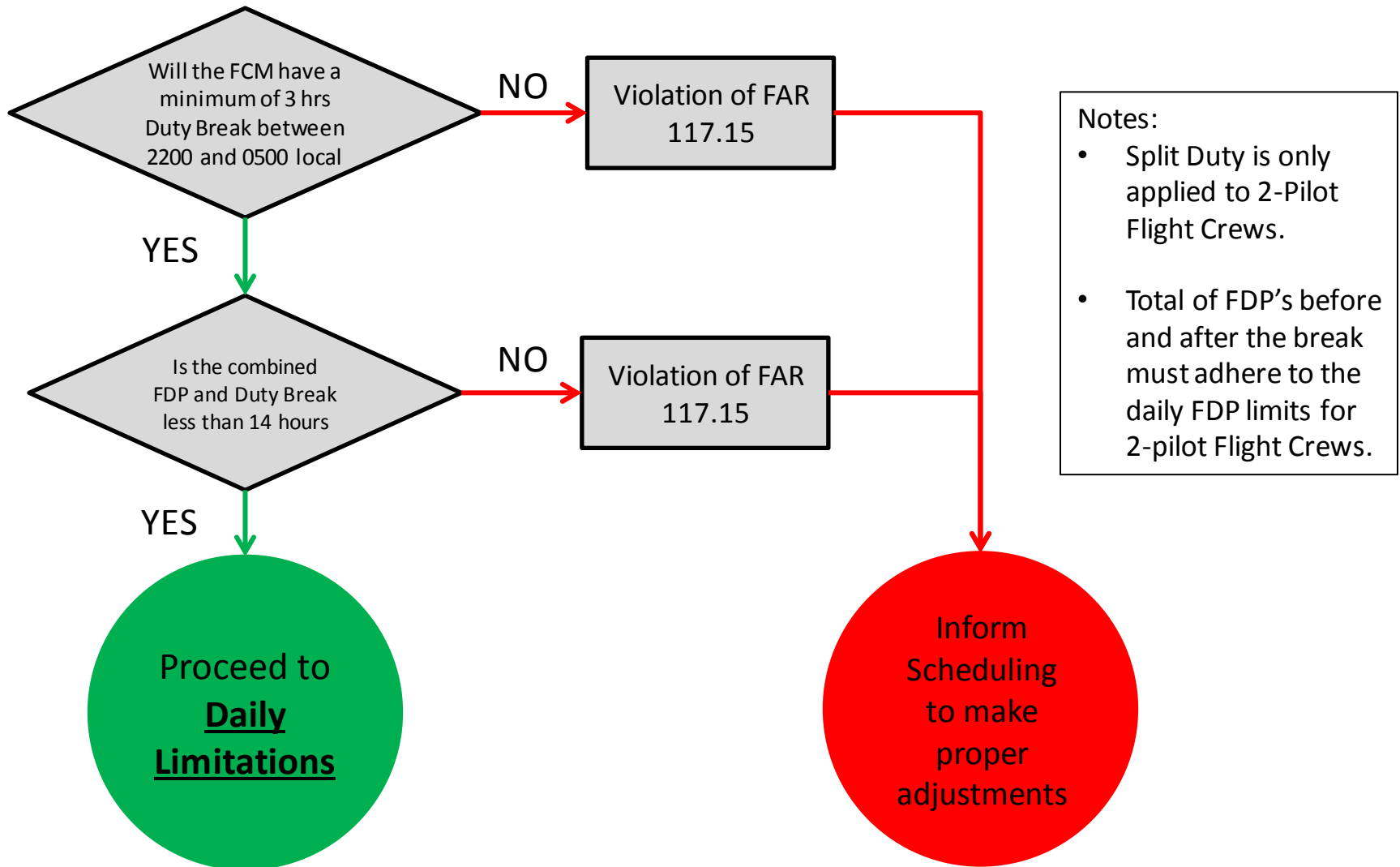
- Permitted Flight Time Limitation
- Permitted FDP Limitation
 - Reduce FDP limitation when FCM begins FDP in an un-acclimated state by 30 minutes.

Note: Split Duty – Mid Duty Break is not included in FDP time

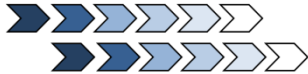
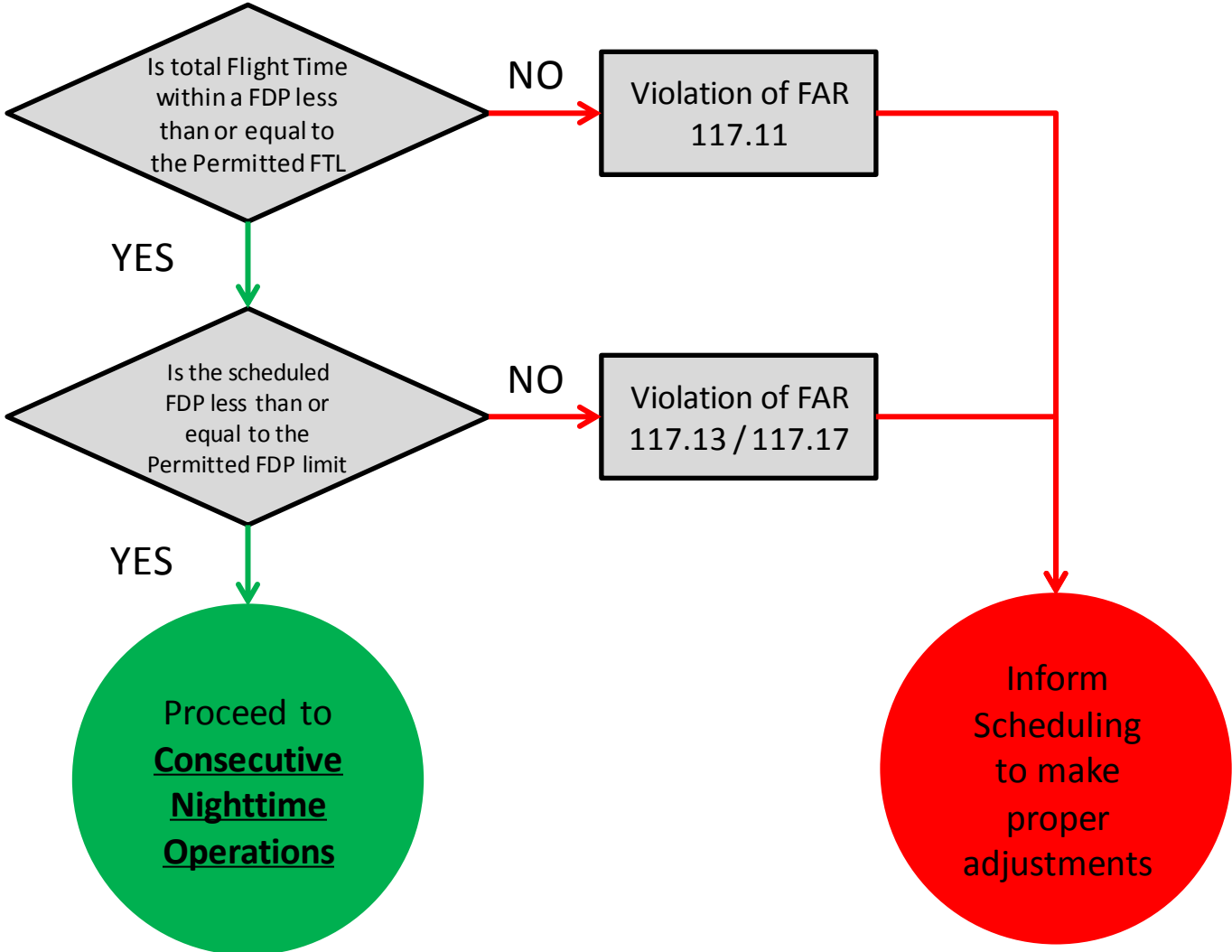
Proceed to
Split Duty, or
Daily
Limitations



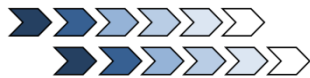
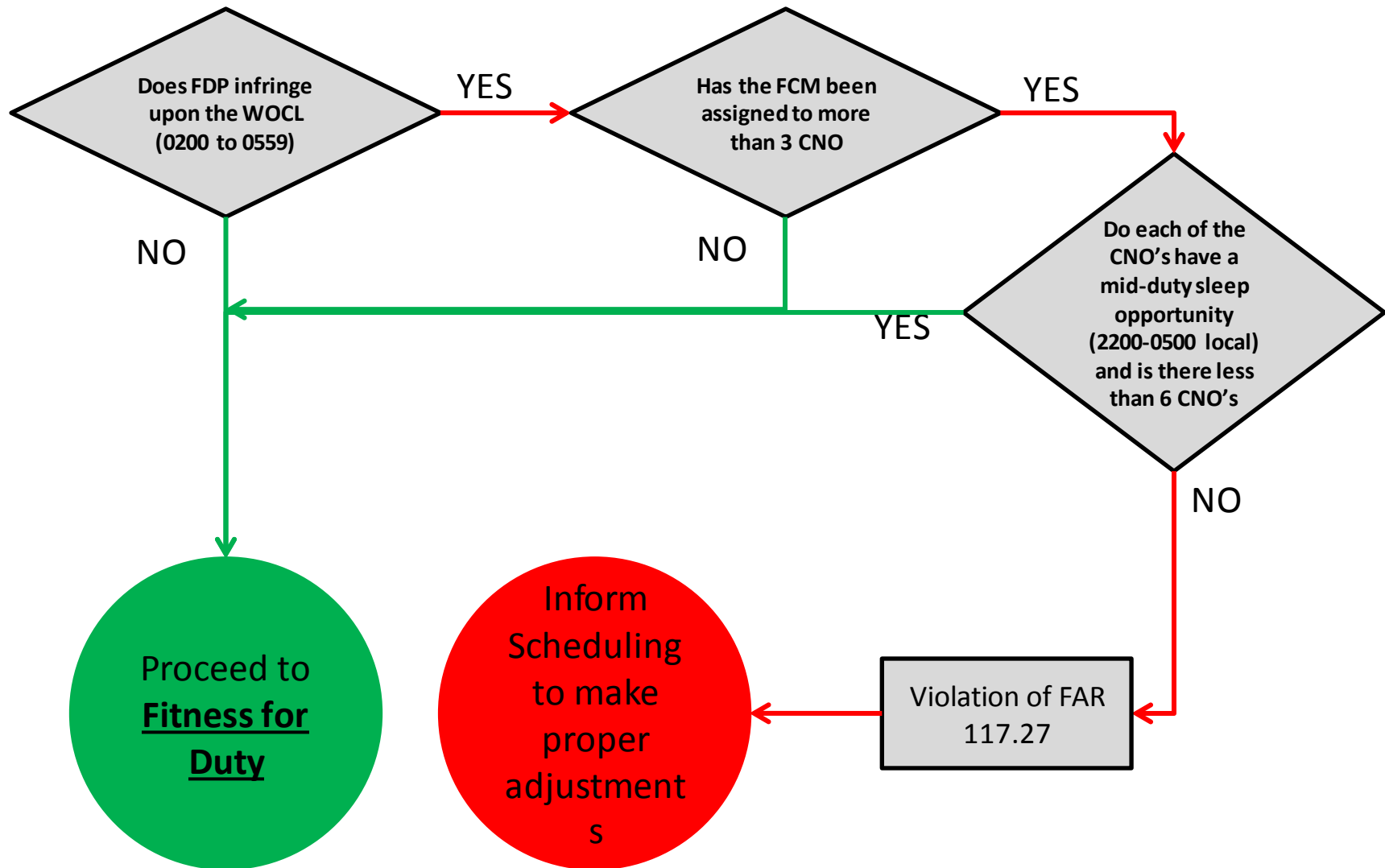
Split Duty



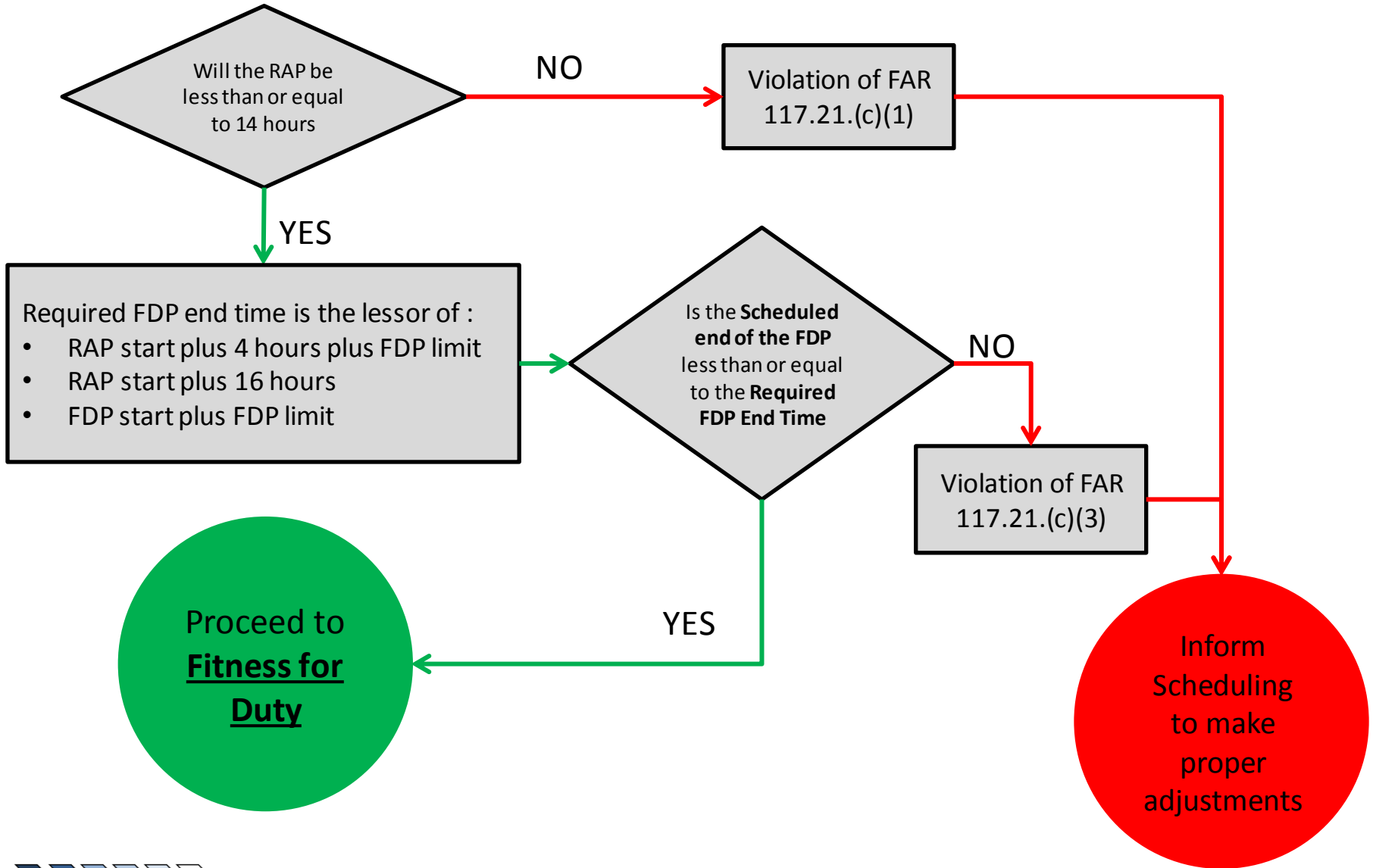
Daily Limitations



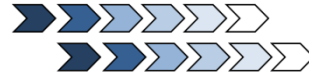
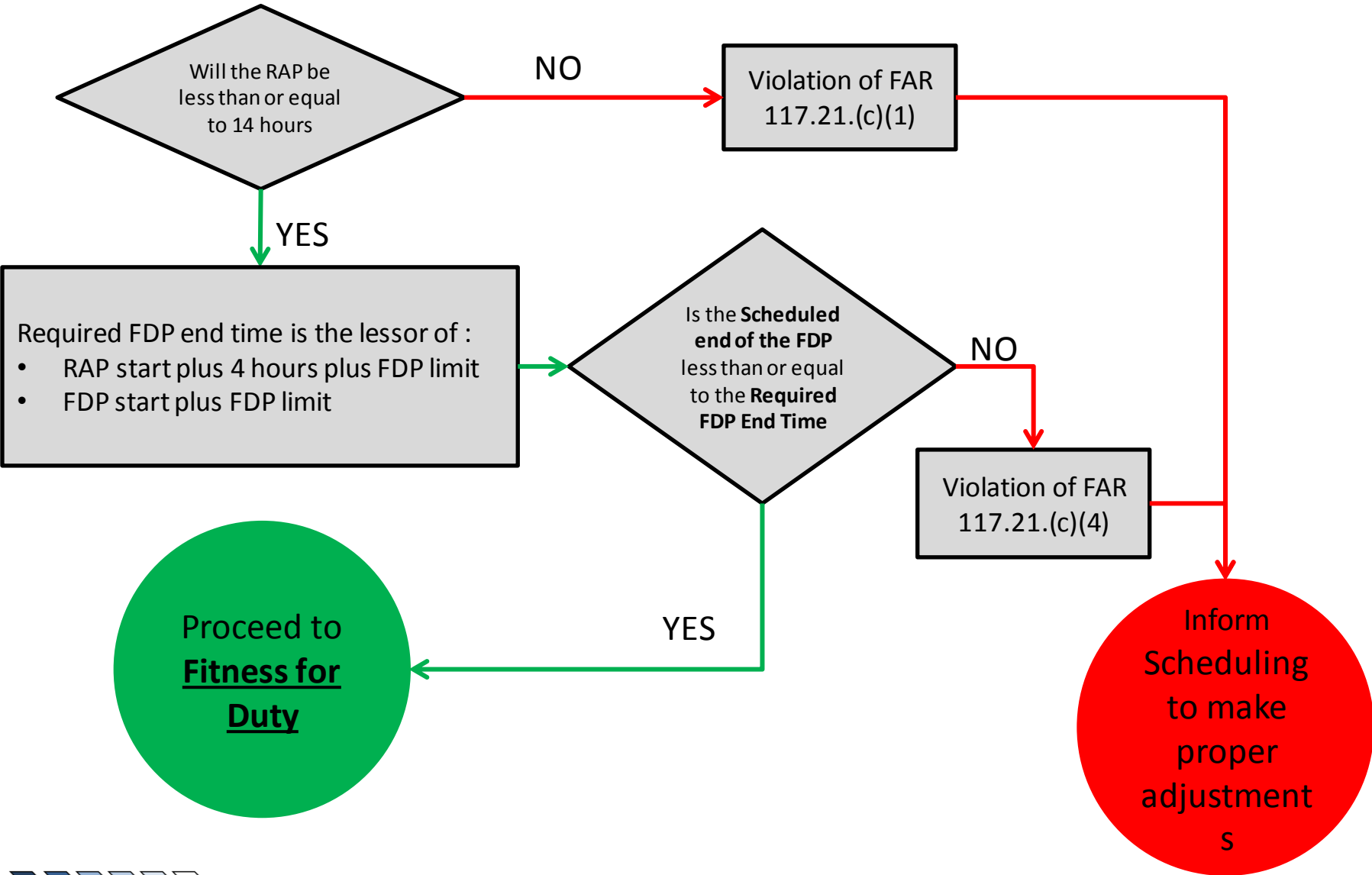
Consecutive Nighttime Operations (CNO)



Combined RAP and FDP - 2 Pilot Flight Crew



Combined RAP and FDP - 3 or 4 Pilot Flight Crew



Fitness for Duty

